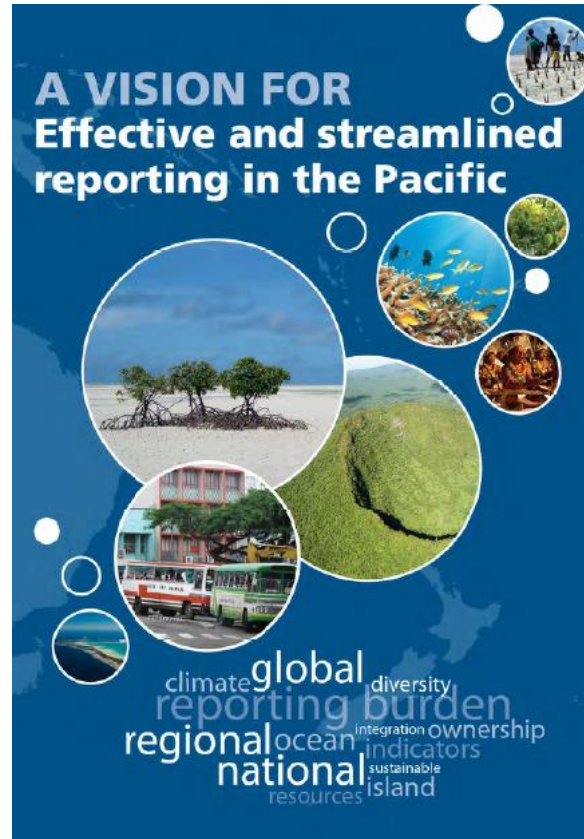


# Inform Project Overview

# Inform goal

- *Environmental data used for decision making*



# Inform title

- Building National and Regional Capacity to Implement Multilateral Environmental Agreements by Strengthening Planning and the State of Environmental Assessment and Reporting in the Pacific

Referred to as the **Inform project**



PROJECT NAME	<i>Building National and Regional Capacity to Implement Multilateral Environmental Agreements by Strengthening Planning and the State of Environmental Assessment and Reporting in the Pacific</i> Referred to as the <b><u>Inform project</u></b>
Objective	<ul style="list-style-type: none"> <li>• A National Reporting System that stores data and/or connects to existing databases.</li> <li>• Improvements in monitoring and reporting.</li> <li>• Improvement of capacity of PICs.</li> </ul>
Summary	This project will establish a Pacific Island Country (PIC) network of national and regional databases for monitoring, evaluating, and analysing environmental information to support environmental planning, forecasting, and reporting requirements at all levels.
Project funding	\$4,319,635 GEF grant, including <b>co-financing from PICs @200,000 each</b>
Geographical scope	Regional Multi-Country: Cook Islands, Federated States of Micronesia (FSM), Fiji, Kiribati, Republic of the Marshall Islands (RMI), Nauru, PNG, Palau, Papua New Guinea (PNG), Samoa, Solomon Islands, Tonga, Tuvalu, and Vanuatu
Duration	Four years, starting January 2017

# History

- *NCSA – capacity self assessment*
  - *Issues gathering and using environmental data recognized as a regional issue*
  - *MEAs recognize the reporting obligations can be a burden*
  - *MGDs had 60 indicators – SDGs 242*
  - *SPREP/EMG team has documented the challenge – recent experience with SOEs/NEMS*
  - *Many here recognize it form the standard requirement for a “desktop review “ for every project*



# Response

- *SPREP members, developed this project in response – to address the systemic issue of environmental data management and use.*
1. *Data management*
  2. *Data analysis*
  3. *Multiple reporting obligations/needs*
  4. *Shift in business practices*



# Implementation modality

- *GEF funded*
- *UN Environment implemented*
- *SPREP executed*
- *Country process and outputs enhanced*



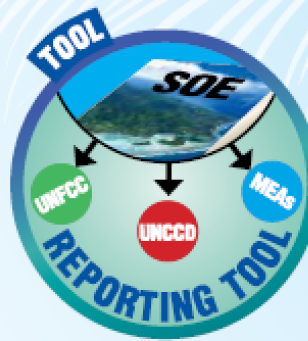


- *The portal –ENV data management*
- *The analysis- Indicators (SOE or other)*
- *The indicator tool (built to reuse indicators in for over lapping reporting requirements*
- *Capacity built, improved processes, including data access and use – Change in practices*

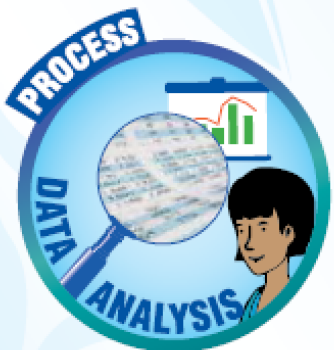
## Inform has 4 products



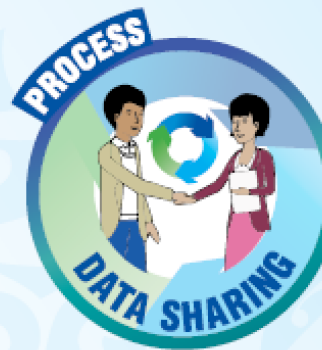
**DATA PORTALS:**  
create a network of national and regional data repositories to store and share environmental data, to monitor the state of the Pacific's environment.



**REPORTING TOOL:**  
assist Pacific islands with meeting multiple national and international reporting requirements, by reusing indicator based reporting.



**DATA ANALYSIS:**  
facilitate the use and analysis of environmental data for national planning and sustainable development.



**DATA SHARING:**  
support a change in practices to enhance the sharing of environmental data. Support legal, policy and planning frameworks.



# Meet Our Team



Easter Galuvao  
Director



Jope Davetanivalu  
Environmental Planning  
Adviser



Paul Anderson  
Inform Project Manager

To be announced  
Environmental  
Information Systems  
Developer and Analyst



Pauline Fruean  
Programme Assistant



Gregory Barbara  
Environmental  
Assessment and Planning  
Officer



Sela Soakai-Simamao  
Inform Technical and  
Finance Assistant



Peter McDonald  
Environmental Monitoring  
and Reporting Specialist



Whitney Isenhower  
Environmental Monitoring  
Specialist



Emile Adams  
Communications  
Specialist

Opem  
Inform Environmental  
Data Assistant



Julie Callebaut  
Environmental Monitoring  
and Reporting Specialist -  
GIS

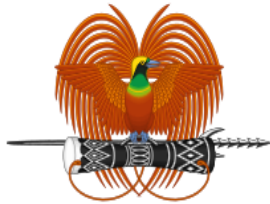
# Inception Workshop

20-24 November 2017



- 1<sup>st</sup> Steering Committee Meeting convened

# Data Portal Development & Roll out



Papua New Guinea Data Portal  
Environmental Information for Decision Making

[Datasets](#)[About](#)[Groups](#)[Stories](#)[Dashboards](#)[Topics ▾](#)[Log in](#)[Register](#)

Atmosphere and  
Climate



Land



Biodiversity



Built Environment



Coastal and Marine



Culture and Heritage



Inland Waters

# Regional Data Portal



Inform Regional Data Portal  
Environmental Information for Decision Making



[Datasets](#) [About](#) [Groups](#) [Stories](#) [Dashboards](#) [Topics](#) ▼

[Log in](#)

[Home](#) / [Dataset](#) / [Search](#)

Content Types

Dataset

Topics

Coastal and Marine (15)

Biodiversity (10)

Land (9)

Built Environment (8)

Culture and Heritage (6)

Atmosphere and Climate (3)

Inland Waters (2)

Tags

Format

553 results

Search

Sort by

Date changed

Order

Descending

Apply

Reset



## Conservation needs assessment summary 2009

PNG Conservation and Environment Protection Authority

The Conservation Needs Assessment (CNA) for Papua New Guinea was requested by the government of Papua New Guinea and funded by the U.S. Agency for International Development (USAID). The CNA was implemented by the Biodiversity Support Program, a...



## Environment Impact Statement for Win Win Investment Ltd

Solomon Islands Environment and Conservation Division

The information provides baseline for environment likely to be affected by the mining and the environment management plan for propose mining

# Reporting Tool Development



## Cook Islands Indicator State Reporting Database

[Home](#)[Manage Indicator Frameworks](#) ▾[Populate Indicator States](#)

### Existing Reports

Report Framework	Targets	Completed Indicator States	
State of Environment Report	24	42/42	<a href="#">View Report</a>
Aichi Targets	20	31/31	<a href="#">View Report</a>
Sustainable Development Goals (SDGs)	17	35/35	<a href="#">View Report</a>
Samoa Pathway	25	30/35	<a href="#">View Report</a>
National Sustainable Development Plan (NSDP)	16	5/10	<a href="#">View Report</a>
Marae Moana Policy	1	1/4	<a href="#">View Report</a>
Convention on the Conservation of Migratory Species of wild animals	2	3/3	<a href="#">View Report</a>
UNFCCC	1	1/1	<a href="#">View Report</a>

# Process Support and Guidance

- Data Agreement, Licensing, MOU templates etc

# Indicators

- SPREP Core Indicators



# Country Engagement & Capacity Building

# Communications & Awareness

- State of Environment Briefs
- Brochure
- Motifs
- Press Releases
- Video's, Youtube etc.

# Meet Our Team



**Easter Galuvao**  
Director



**Jope Davetanivalu**  
Environmental Planning Adviser



**Pauline Fruean**  
Programme Assistant



**Gregory Barbara**  
Environmental Assessment and  
Planning Officer



**Whitney Isenhower**  
Environmental Reporting  
Specialist (US Peace Corps)



**Emile Adams**  
Project Communications  
Support Specialist



**Paul Anderson**  
Inform Project  
Manager



**Julie Callebaut**  
Environmental Monitoring  
and Reporting Specialist -  
GIS



**Peter McDonald**  
Environmental Monitoring  
and Reporting Specialist



**Sela Soakai-Simamao**  
Inform Project Finance & Technical  
Assistant

# Questions ?